



<http://www.fo-cal.co.uk>

Reikan FoCal Fully Automatic Mode Test Report

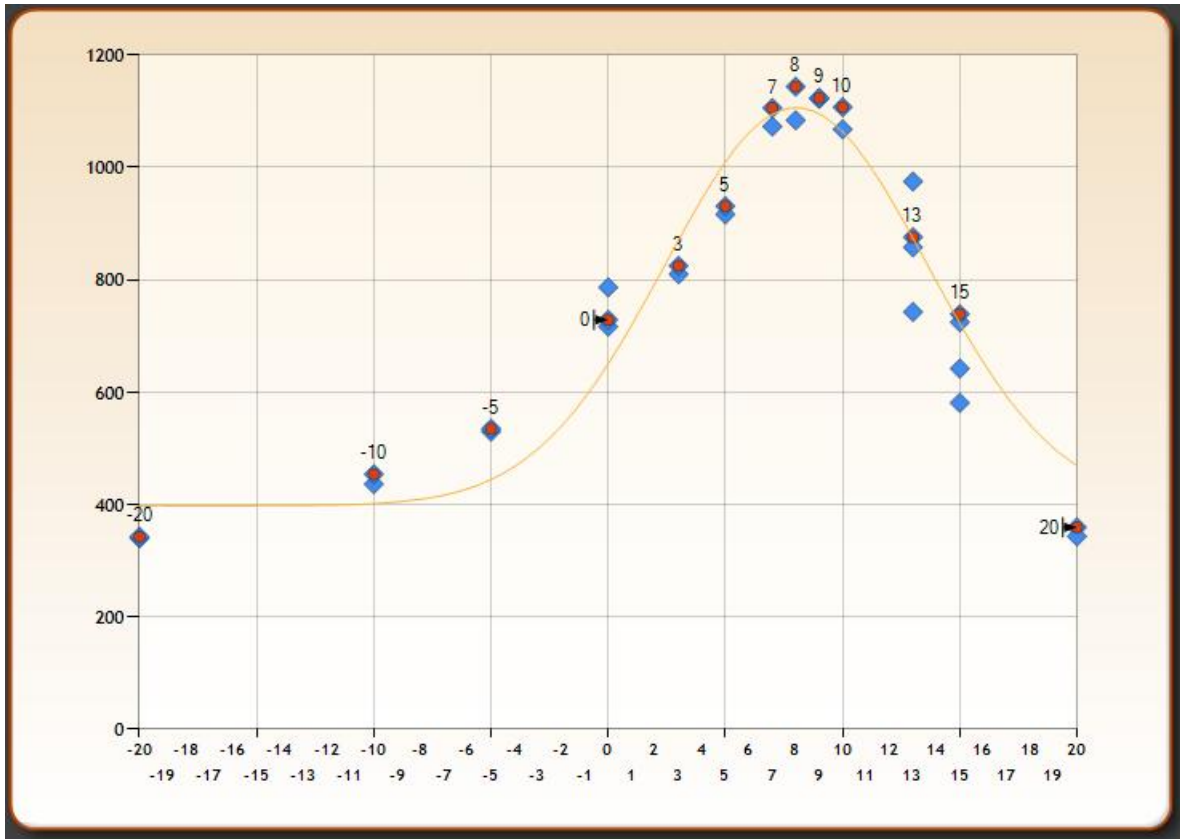
Created on: 1/20/2012 4:57:22 PM

Overview

Test Information

Property	Description
Camera:	Canon EOS 5D Mark II
Serial Number:	1120700803
Lens	EF85mm f/1.2L II USM
Focal Length	85.0mm
Distance to Target (Approx)	Only available with FoCal Target and Target Optimisation enabled
Shot Count	29 (Validated: 12)
Calculated AFMA	8
Result Confidence	Good

Overall Result Chart



Analysed Images

AFMA=0

Aperture: f/1.2

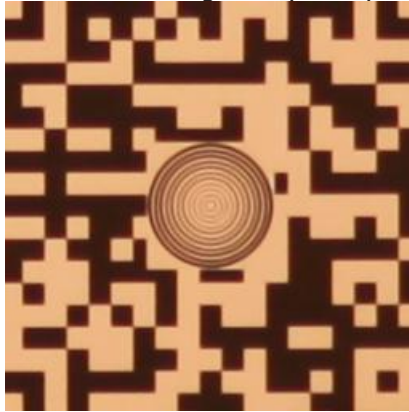
Shutter Speed:1/400s

EV: 9.1

Quality Measure: 786.1 (a higher value is a better quality image)

Image was optimised

The following image is a crop of the section of image analysed by FoCal:



AFMA=0

Aperture: f/1.2

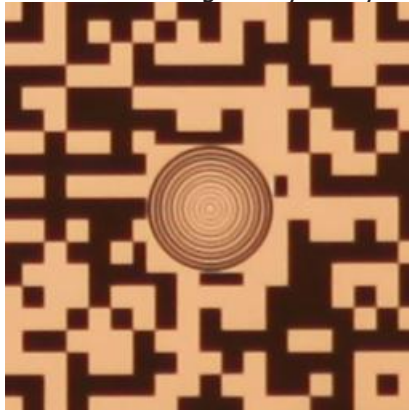
Shutter Speed:1/400s

EV: 9.1

Quality Measure: 716.3 (a higher value is a better quality image)

Image was optimised

The following image is a crop of the section of image analysed by FoCal:



AFMA=0

Aperture: f/1.2

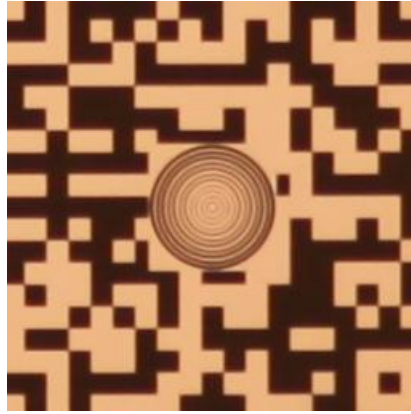
Shutter Speed:1/400s

EV: 9.1

Quality Measure: 728.4 (a higher value is a better quality image)

Image was optimised

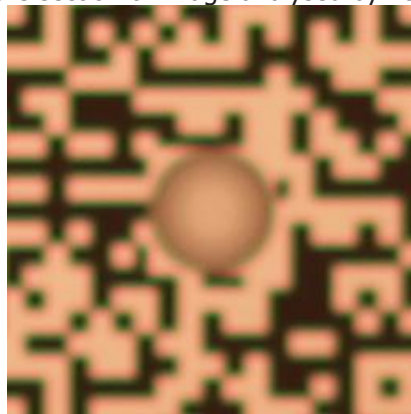
The following image is a crop of the section of image analysed by FoCal:



AFMA=-20

Aperture: f/1.2
Shutter Speed:1/400s
EV: 9.1
Quality Measure: 338.8 (a higher value is a better quality image)
Image was optimised

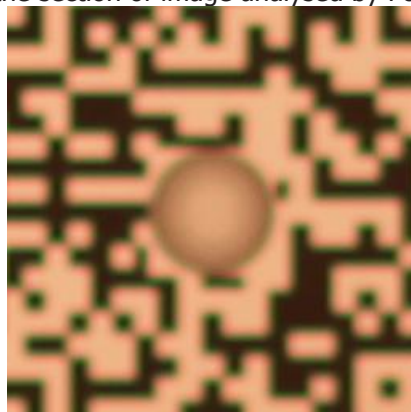
The following image is a crop of the section of image analysed by FoCal:



AFMA=-20

Aperture: f/1.2
Shutter Speed:1/400s
EV: 9.1
Quality Measure: 341.4 (a higher value is a better quality image)
Image was optimised

The following image is a crop of the section of image analysed by FoCal:

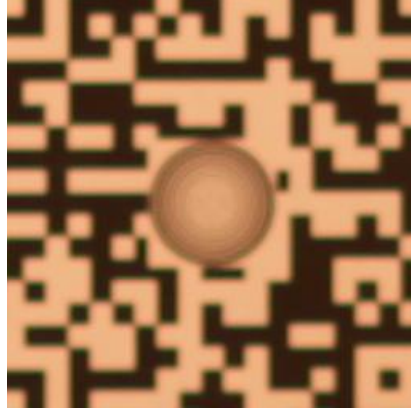


AFMA=-10

Reikan FoCal Fully Automatic Mode Test Report
1/20/2012 4:50:49 PM

Aperture: f/1.2
Shutter Speed:1/400s
EV: 9.1
Quality Measure: 435.4 (a higher value is a better quality image)
Image was optimised

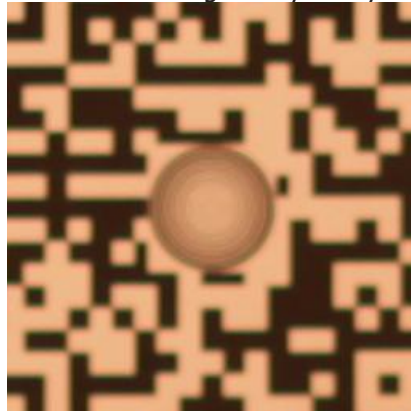
The following image is a crop of the section of image analysed by FoCal:



AFMA=-10

Aperture: f/1.2
Shutter Speed:1/400s
EV: 9.1
Quality Measure: 453.0 (a higher value is a better quality image)
Image was optimised

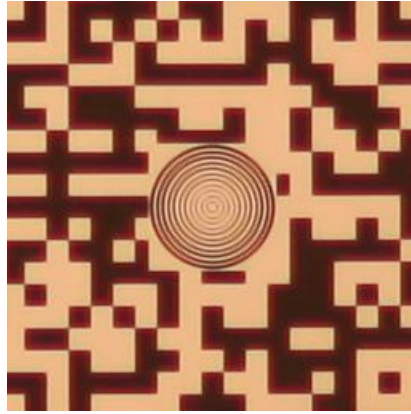
The following image is a crop of the section of image analysed by FoCal:



AFMA=10

Aperture: f/1.2
Shutter Speed:1/400s
EV: 9.1
Quality Measure: 1068.0 (a higher value is a better quality image)
Image was optimised

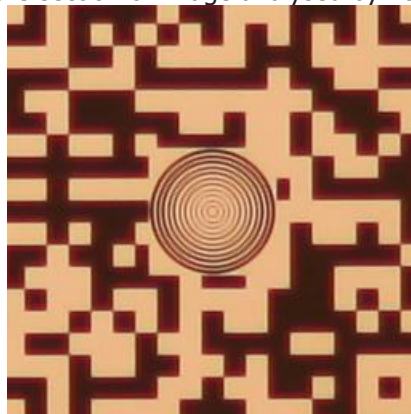
The following image is a crop of the section of image analysed by FoCal:



AFMA=10

Aperture: f/1.2
Shutter Speed:1/400s
EV: 9.1
Quality Measure: 1107.5 (a higher value is a better quality image)
Image was optimised

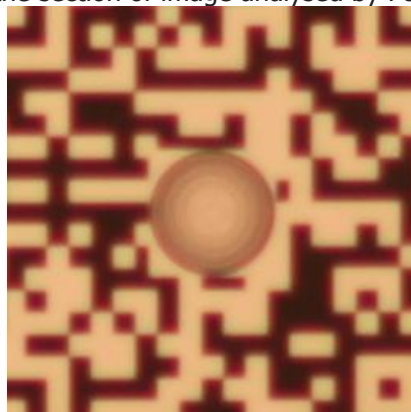
The following image is a crop of the section of image analysed by FoCal:



AFMA=20

Aperture: f/1.2
Shutter Speed:1/400s
EV: 9.1
Quality Measure: 358.4 (a higher value is a better quality image)
Image was optimised

The following image is a crop of the section of image analysed by FoCal:

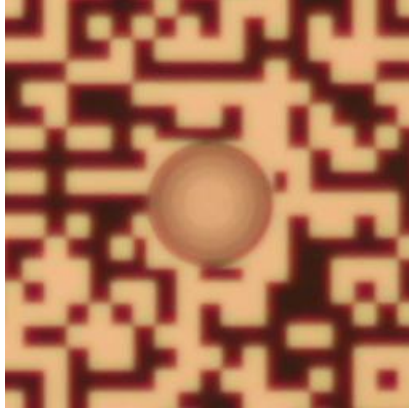


AFMA=20

Reikan FoCal Fully Automatic Mode Test Report
1/20/2012 4:50:49 PM

Aperture: f/1.2
Shutter Speed:1/400s
EV: 9.1
Quality Measure: 342.3 (a higher value is a better quality image)
Image was optimised

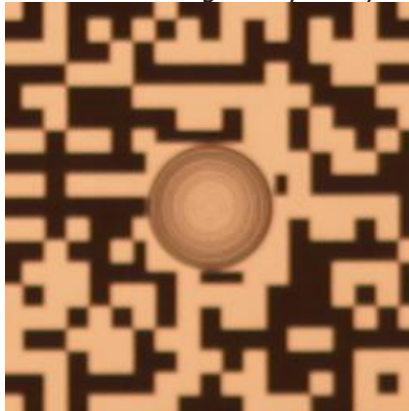
The following image is a crop of the section of image analysed by FoCal:



AFMA=-5

Aperture: f/1.2
Shutter Speed:1/400s
EV: 9.1
Quality Measure: 529.1 (a higher value is a better quality image)
Image was optimised

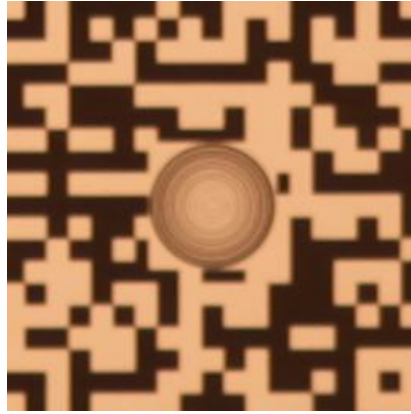
The following image is a crop of the section of image analysed by FoCal:



AFMA=-5

Aperture: f/1.2
Shutter Speed:1/400s
EV: 9.1
Quality Measure: 534.2 (a higher value is a better quality image)
Image was optimised

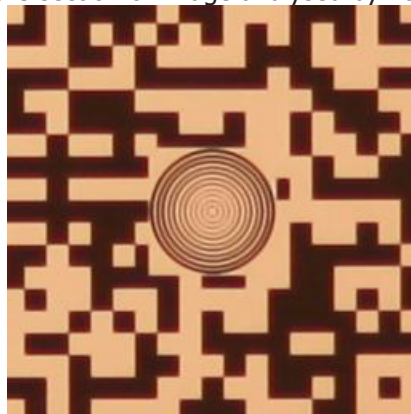
The following image is a crop of the section of image analysed by FoCal:



AFMA=5

Aperture: f/1.2
Shutter Speed:1/400s
EV: 9.1
Quality Measure: 916.4 (a higher value is a better quality image)
Image was optimised

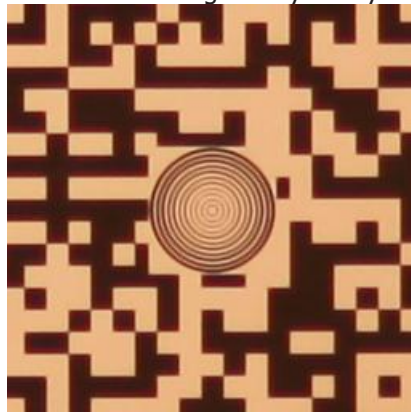
The following image is a crop of the section of image analysed by FoCal:



AFMA=5

Aperture: f/1.2
Shutter Speed:1/400s
EV: 9.1
Quality Measure: 930.9 (a higher value is a better quality image)
Image was optimised

The following image is a crop of the section of image analysed by FoCal:

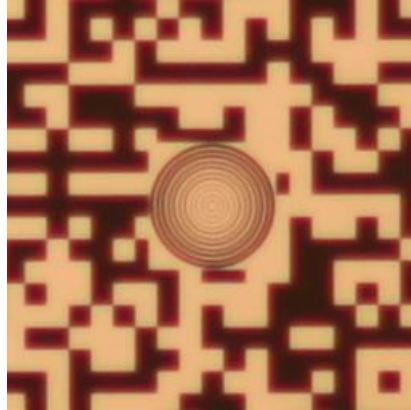


AFMA=15

Reikan FoCal Fully Automatic Mode Test Report
1/20/2012 4:50:49 PM

Aperture: f/1.2
Shutter Speed:1/400s
EV: 9.1
Quality Measure: 580.2 (a higher value is a better quality image)
Image was optimised

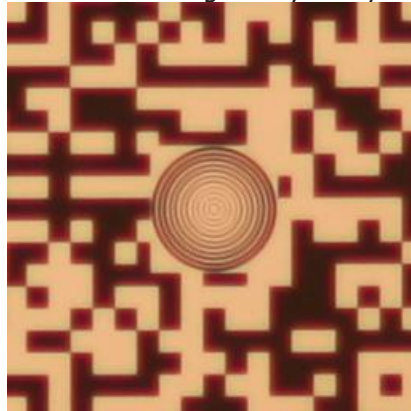
The following image is a crop of the section of image analysed by FoCal:



AFMA=15

Aperture: f/1.2
Shutter Speed:1/400s
EV: 9.1
Quality Measure: 724.1 (a higher value is a better quality image)
Image was optimised

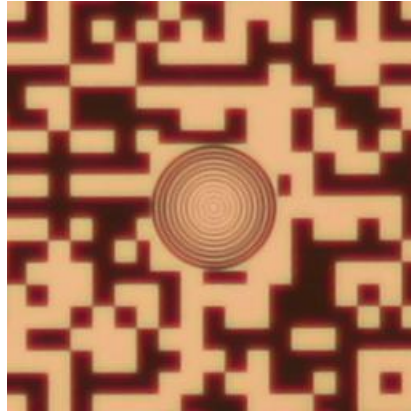
The following image is a crop of the section of image analysed by FoCal:



AFMA=15

Aperture: f/1.2
Shutter Speed:1/400s
EV: 9.1
Quality Measure: 641.3 (a higher value is a better quality image)
Image was optimised

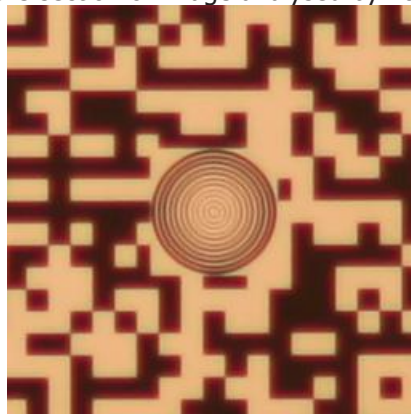
The following image is a crop of the section of image analysed by FoCal:



AFMA=15

Aperture: f/1.2
Shutter Speed:1/400s
EV: 9.1
Quality Measure: 738.4 (a higher value is a better quality image)
Image was optimised

The following image is a crop of the section of image analysed by FoCal:



AFMA=3

Aperture: f/1.2
Shutter Speed:1/400s
EV: 9.1
Quality Measure: 809.8 (a higher value is a better quality image)
Image was optimised

The following image is a crop of the section of image analysed by FoCal:

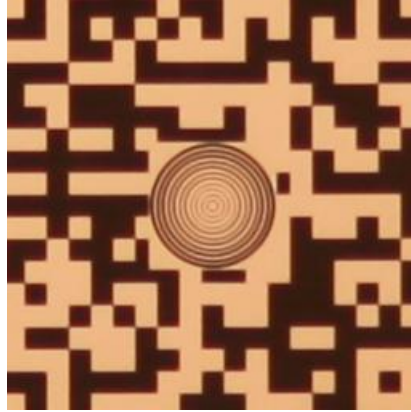


AFMA=3

Reikan FoCal Fully Automatic Mode Test Report
1/20/2012 4:50:49 PM

Aperture: f/1.2
Shutter Speed:1/400s
EV: 9.1
Quality Measure: 824.6 (a higher value is a better quality image)
Image was optimised

The following image is a crop of the section of image analysed by FoCal:



AFMA=7

Aperture: f/1.2
Shutter Speed:1/400s
EV: 9.1
Quality Measure: 1073.3 (a higher value is a better quality image)
Image was optimised

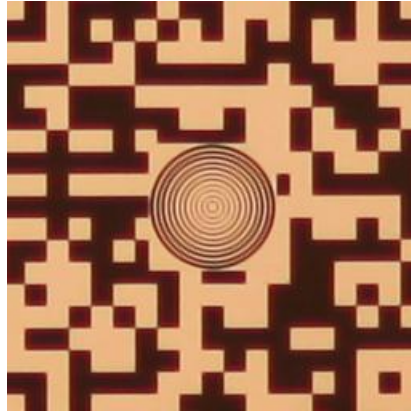
The following image is a crop of the section of image analysed by FoCal:



AFMA=7

Aperture: f/1.2
Shutter Speed:1/400s
EV: 9.1
Quality Measure: 1106.2 (a higher value is a better quality image)
Image was optimised

The following image is a crop of the section of image analysed by FoCal:



AFMA=9

Aperture: f/1.2
Shutter Speed:1/400s
EV: 9.1
Quality Measure: 1122.4 (a higher value is a better quality image)
Image was optimised

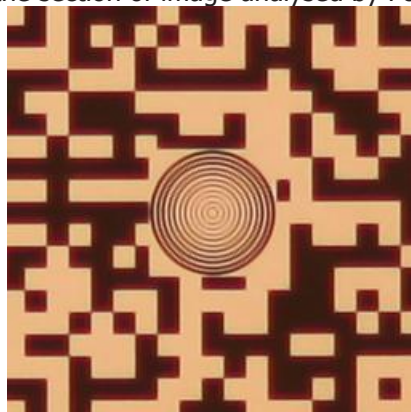
The following image is a crop of the section of image analysed by FoCal:



AFMA=9

Aperture: f/1.2
Shutter Speed:1/400s
EV: 9.1
Quality Measure: 1124.3 (a higher value is a better quality image)
Image was optimised

The following image is a crop of the section of image analysed by FoCal:

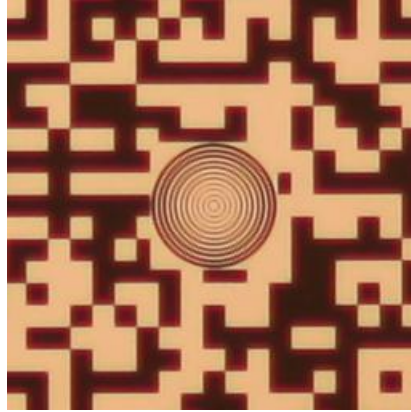


AFMA=13

Reikan FoCal Fully Automatic Mode Test Report
1/20/2012 4:50:49 PM

Aperture: f/1.2
Shutter Speed:1/400s
EV: 9.1
Quality Measure: 975.1 (a higher value is a better quality image)
Image was optimised

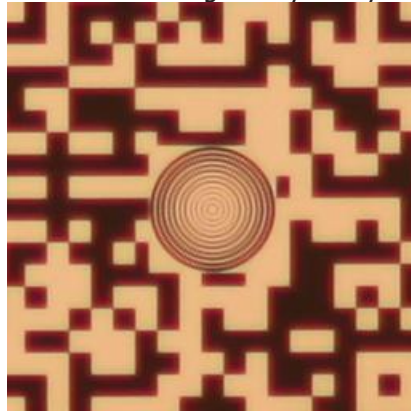
The following image is a crop of the section of image analysed by FoCal:



AFMA=13

Aperture: f/1.2
Shutter Speed:1/400s
EV: 9.1
Quality Measure: 742.4 (a higher value is a better quality image)
Image was optimised

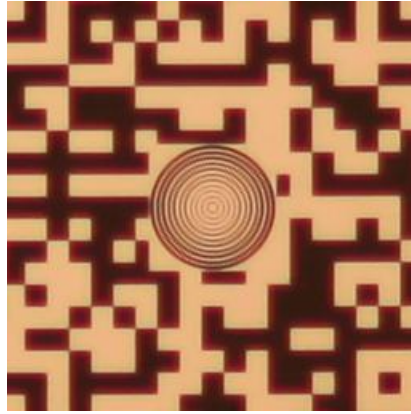
The following image is a crop of the section of image analysed by FoCal:



AFMA=13

Aperture: f/1.2
Shutter Speed:1/400s
EV: 9.1
Quality Measure: 875.8 (a higher value is a better quality image)
Image was optimised

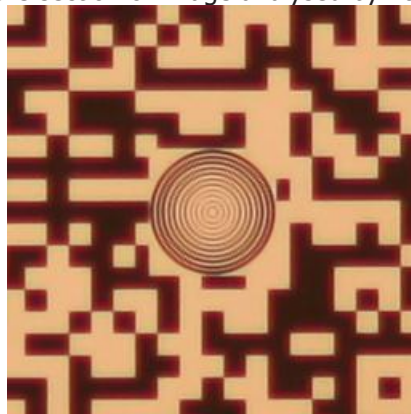
The following image is a crop of the section of image analysed by FoCal:



AFMA=13

Aperture: f/1.2
Shutter Speed:1/400s
EV: 9.1
Quality Measure: 857.7 (a higher value is a better quality image)
Image was optimised

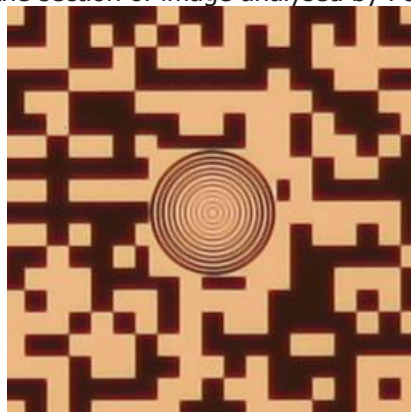
The following image is a crop of the section of image analysed by FoCal:



AFMA=8

Aperture: f/1.2
Shutter Speed:1/400s
EV: 9.1
Quality Measure: 1084.3 (a higher value is a better quality image)
Image was optimised

The following image is a crop of the section of image analysed by FoCal:



AFMA=8

Reikan FoCal Fully Automatic Mode Test Report
1/20/2012 4:50:49 PM

Aperture: f/1.2

Shutter Speed:1/400s

EV: 9.1

Quality Measure: 1144.2 (a higher value is a better quality image)

Image was optimised

The following image is a crop of the section of image analysed by FoCal:

