



<http://www.fo-cal.co.uk>

Reikan FoCal Fully Automatic Mode Test Report

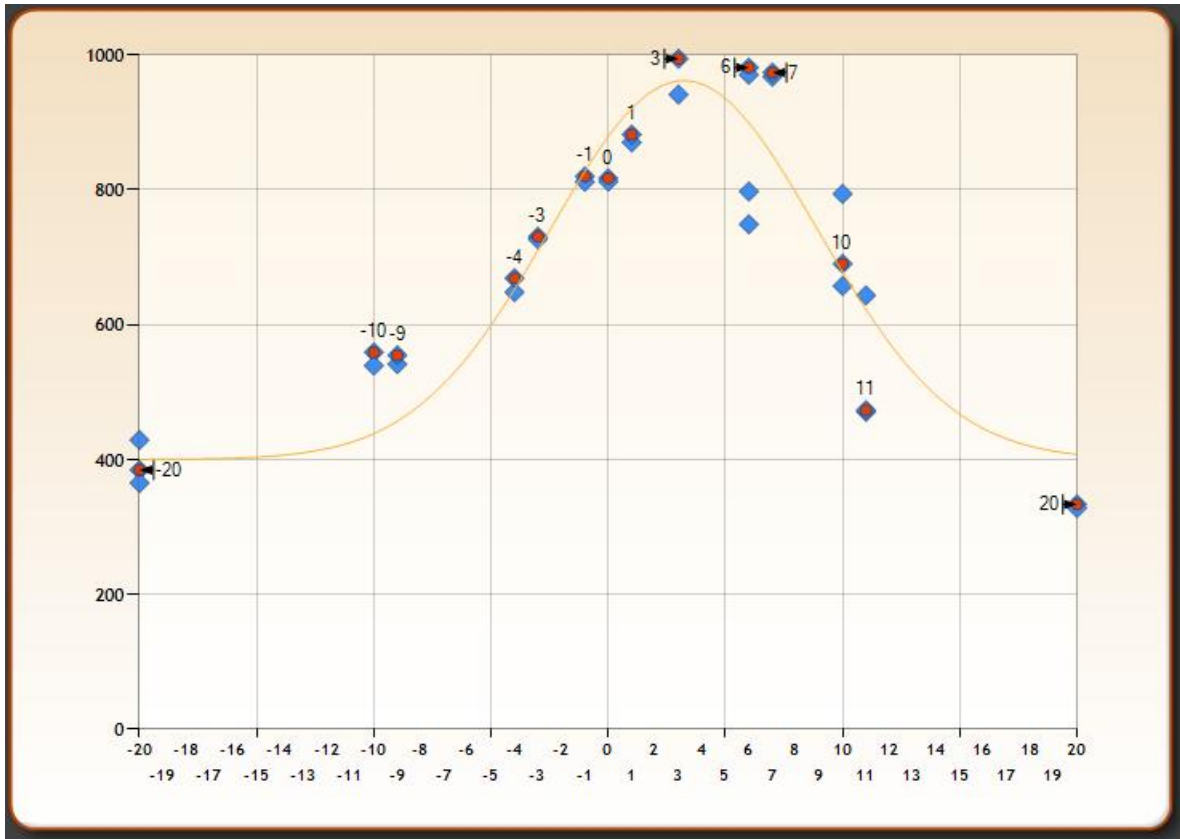
Created on: 1/20/2012 5:28:22 PM

Overview

Test Information

Property	Description
Camera:	Canon EOS 5D Mark II
Serial Number:	1120700803
Lens	EF50mm f/1.4 USM
Focal Length	50.0mm
Distance to Target (Approx)	Only available with FoCal Target and Target Optimisation enabled
Shot Count	33 (Validated: 14)
Calculated AFMA	3
Result Confidence	Acceptable

Overall Result Chart



Analysed Images

AFMA=0

Aperture: f/1.4

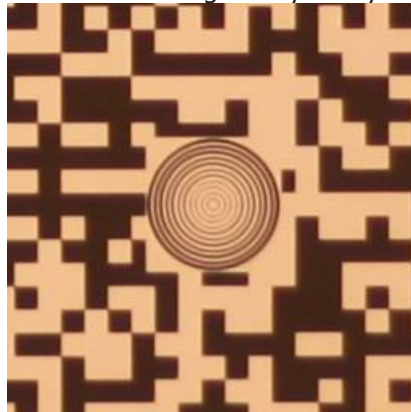
Shutter Speed:1/250s

EV: 8.9

Quality Measure: 817.2 (a higher value is a better quality image)

Image was optimised

The following image is a crop of the section of image analysed by FoCal:



AFMA=0

Aperture: f/1.4

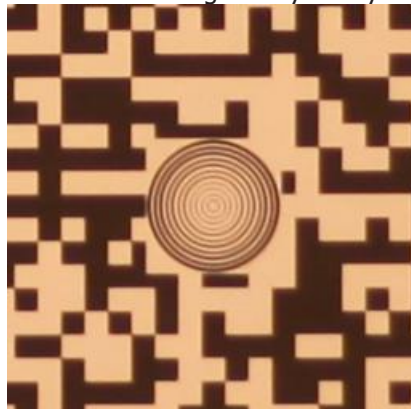
Shutter Speed:1/250s

EV: 8.9

Quality Measure: 812.3 (a higher value is a better quality image)

Image was optimised

The following image is a crop of the section of image analysed by FoCal:



AFMA=-20

Aperture: f/1.4

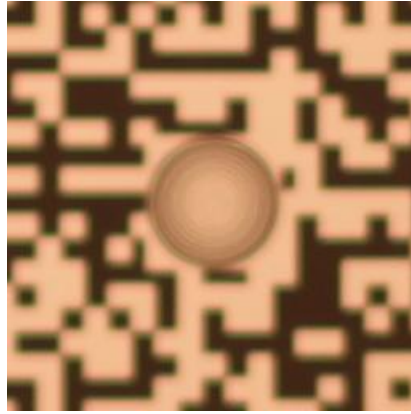
Shutter Speed:1/250s

EV: 8.9

Quality Measure: 383.9 (a higher value is a better quality image)

Image was optimised

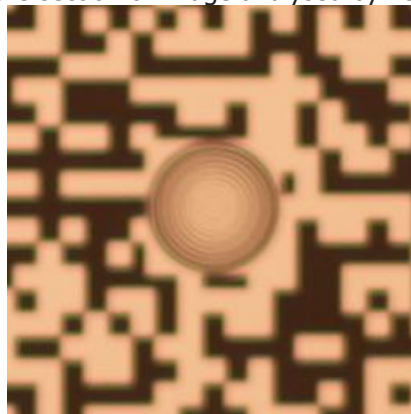
The following image is a crop of the section of image analysed by FoCal:



AFMA=-20

Aperture: f/1.4
Shutter Speed:1/250s
EV: 8.9
Quality Measure: 428.2 (a higher value is a better quality image)
Image was optimised

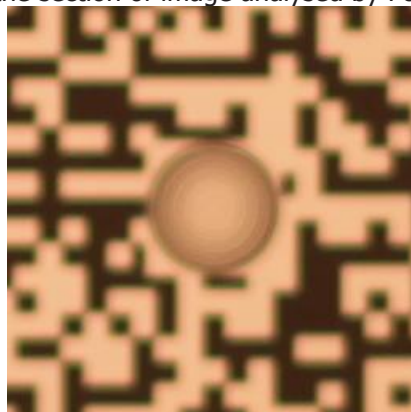
The following image is a crop of the section of image analysed by FoCal:



AFMA=-20

Aperture: f/1.4
Shutter Speed:1/250s
EV: 8.9
Quality Measure: 364.4 (a higher value is a better quality image)
Image was optimised

The following image is a crop of the section of image analysed by FoCal:

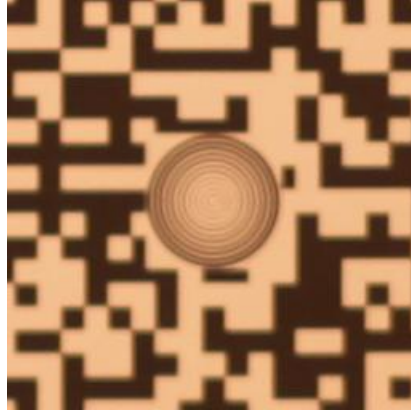


AFMA=-10

Reikan FoCal Fully Automatic Mode Test Report
1/20/2012 5:23:15 PM

Aperture: f/1.4
Shutter Speed:1/250s
EV: 8.9
Quality Measure: 558.6 (a higher value is a better quality image)
Image was optimised

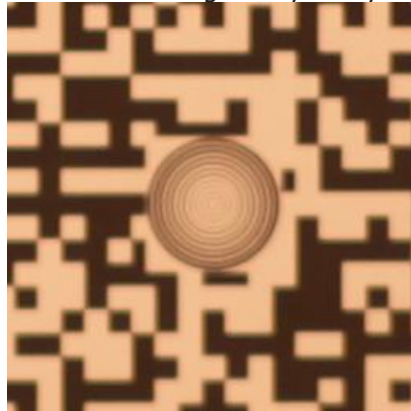
The following image is a crop of the section of image analysed by FoCal:



AFMA=-10

Aperture: f/1.4
Shutter Speed:1/250s
EV: 8.9
Quality Measure: 538.9 (a higher value is a better quality image)
Image was optimised

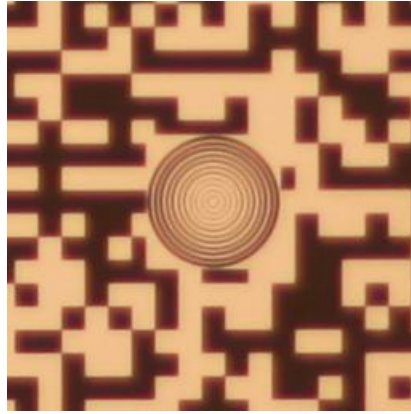
The following image is a crop of the section of image analysed by FoCal:



AFMA=10

Aperture: f/1.4
Shutter Speed:1/250s
EV: 8.9
Quality Measure: 690.2 (a higher value is a better quality image)
Image was optimised

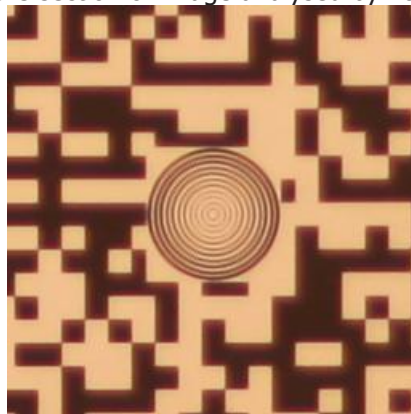
The following image is a crop of the section of image analysed by FoCal:



AFMA=10

Aperture: f/1.4
Shutter Speed:1/250s
EV: 8.9
Quality Measure: 794.0 (a higher value is a better quality image)
Image was optimised

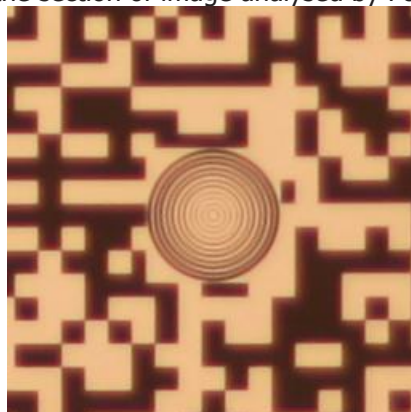
The following image is a crop of the section of image analysed by FoCal:



AFMA=10

Aperture: f/1.4
Shutter Speed:1/250s
EV: 8.9
Quality Measure: 657.1 (a higher value is a better quality image)
Image was optimised

The following image is a crop of the section of image analysed by FoCal:

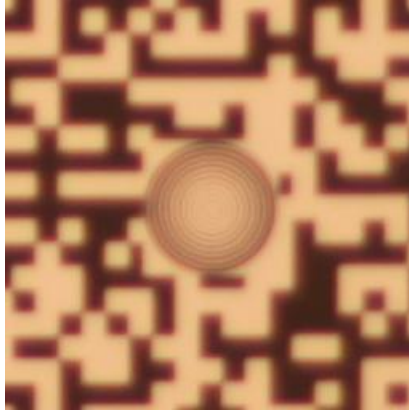


AFMA=20

Reikan FoCal Fully Automatic Mode Test Report
1/20/2012 5:23:15 PM

Aperture: f/1.4
Shutter Speed:1/250s
EV: 8.9
Quality Measure: 332.8 (a higher value is a better quality image)
Image was optimised

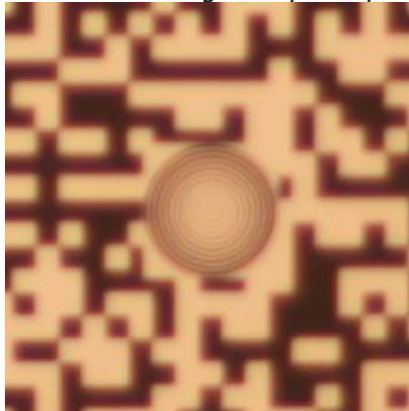
The following image is a crop of the section of image analysed by FoCal:



AFMA=20

Aperture: f/1.4
Shutter Speed:1/250s
EV: 8.9
Quality Measure: 327.3 (a higher value is a better quality image)
Image was optimised

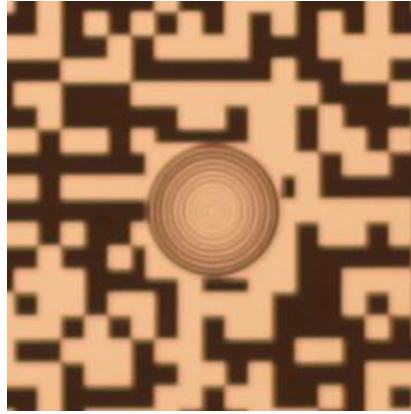
The following image is a crop of the section of image analysed by FoCal:



AFMA=-9

Aperture: f/1.4
Shutter Speed:1/250s
EV: 8.9
Quality Measure: 541.2 (a higher value is a better quality image)
Image was optimised

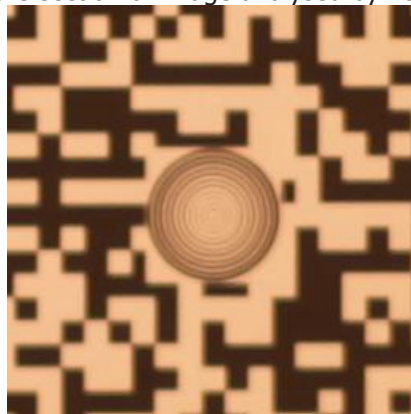
The following image is a crop of the section of image analysed by FoCal:



AFMA=-9

Aperture: f/1.4
Shutter Speed:1/250s
EV: 8.9
Quality Measure: 554.2 (a higher value is a better quality image)
Image was optimised

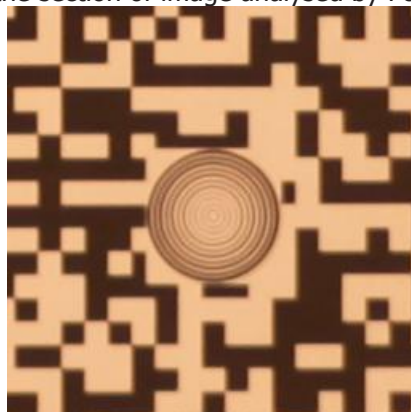
The following image is a crop of the section of image analysed by FoCal:



AFMA=-4

Aperture: f/1.4
Shutter Speed:1/250s
EV: 8.9
Quality Measure: 648.0 (a higher value is a better quality image)
Image was optimised

The following image is a crop of the section of image analysed by FoCal:



AFMA=-4

Reikan FoCal Fully Automatic Mode Test Report
1/20/2012 5:23:15 PM

Aperture: f/1.4
Shutter Speed:1/250s
EV: 8.9
Quality Measure: 668.8 (a higher value is a better quality image)
Image was optimised

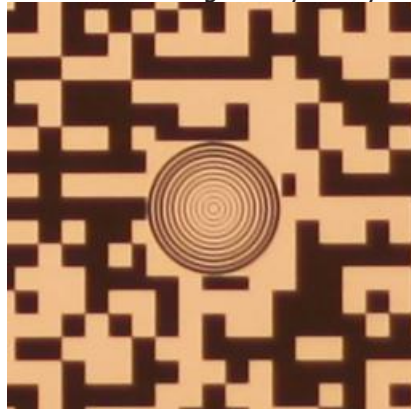
The following image is a crop of the section of image analysed by FoCal:



AFMA=1

Aperture: f/1.4
Shutter Speed:1/320s
EV: 9.2
Quality Measure: 870.7 (a higher value is a better quality image)
Image was optimised

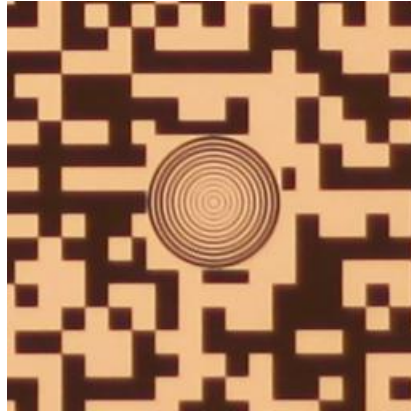
The following image is a crop of the section of image analysed by FoCal:



AFMA=1

Aperture: f/1.4
Shutter Speed:1/250s
EV: 8.9
Quality Measure: 882.3 (a higher value is a better quality image)
Image was optimised

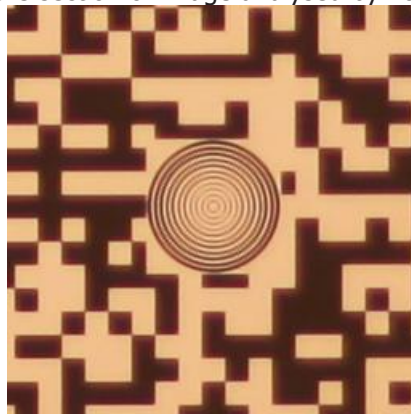
The following image is a crop of the section of image analysed by FoCal:



AFMA=6

Aperture: f/1.4
Shutter Speed:1/250s
EV: 8.9
Quality Measure: 981.7 (a higher value is a better quality image)
Image was optimised

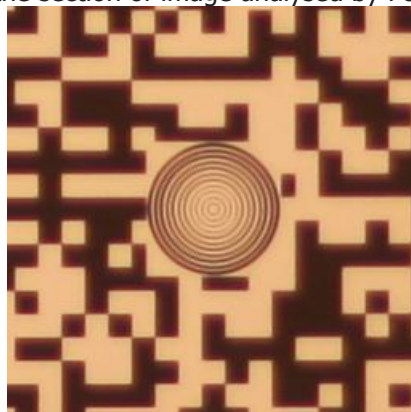
The following image is a crop of the section of image analysed by FoCal:



AFMA=6

Aperture: f/1.4
Shutter Speed:1/320s
EV: 9.2
Quality Measure: 797.7 (a higher value is a better quality image)
Image was optimised

The following image is a crop of the section of image analysed by FoCal:

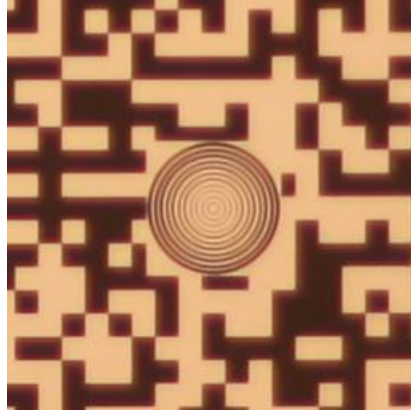


AFMA=6

Reikan FoCal Fully Automatic Mode Test Report
1/20/2012 5:23:15 PM

Aperture: f/1.4
Shutter Speed:1/250s
EV: 8.9
Quality Measure: 748.9 (a higher value is a better quality image)
Image was optimised

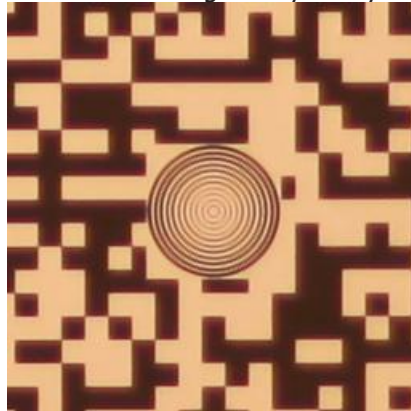
The following image is a crop of the section of image analysed by FoCal:



AFMA=6

Aperture: f/1.4
Shutter Speed:1/250s
EV: 8.9
Quality Measure: 971.2 (a higher value is a better quality image)
Image was optimised

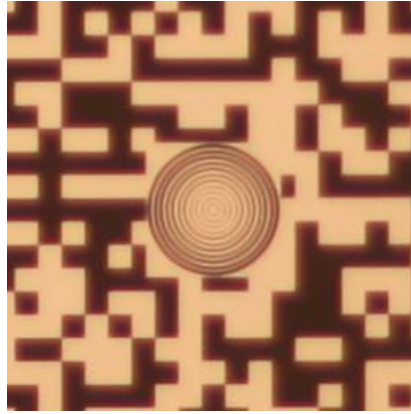
The following image is a crop of the section of image analysed by FoCal:



AFMA=11

Aperture: f/1.4
Shutter Speed:1/250s
EV: 8.9
Quality Measure: 643.2 (a higher value is a better quality image)
Image was optimised

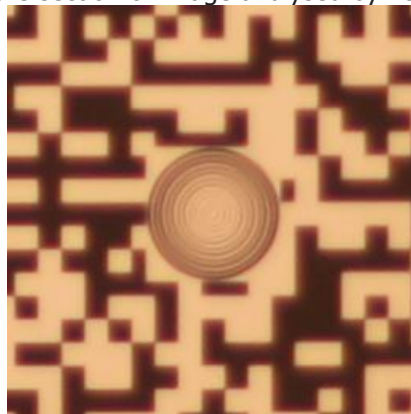
The following image is a crop of the section of image analysed by FoCal:



AFMA=11

Aperture: f/1.4
Shutter Speed:1/250s
EV: 8.9
Quality Measure: 470.3 (a higher value is a better quality image)
Image was optimised

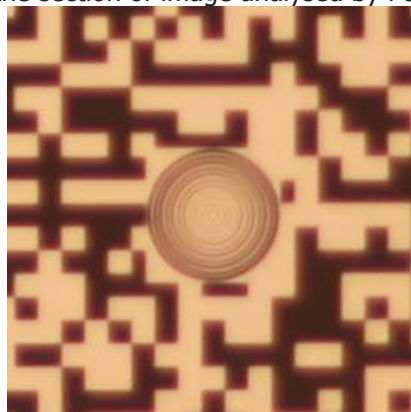
The following image is a crop of the section of image analysed by FoCal:



AFMA=11

Aperture: f/1.4
Shutter Speed:1/250s
EV: 8.9
Quality Measure: 472.7 (a higher value is a better quality image)
Image was optimised

The following image is a crop of the section of image analysed by FoCal:

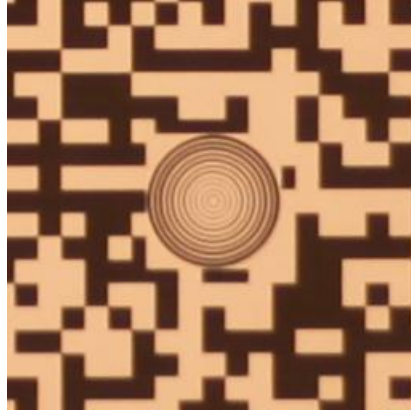


AFMA=-3

Reikan FoCal Fully Automatic Mode Test Report
1/20/2012 5:23:15 PM

Aperture: f/1.4
Shutter Speed:1/250s
EV: 8.9
Quality Measure: 730.5 (a higher value is a better quality image)
Image was optimised

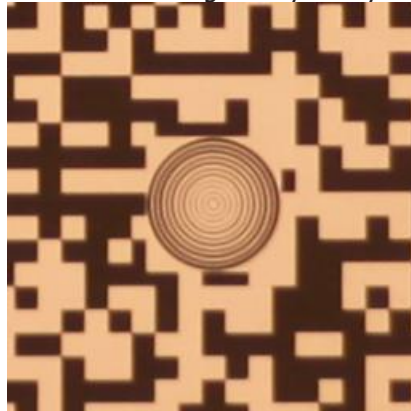
The following image is a crop of the section of image analysed by FoCal:



AFMA=-3

Aperture: f/1.4
Shutter Speed:1/250s
EV: 8.9
Quality Measure: 726.7 (a higher value is a better quality image)
Image was optimised

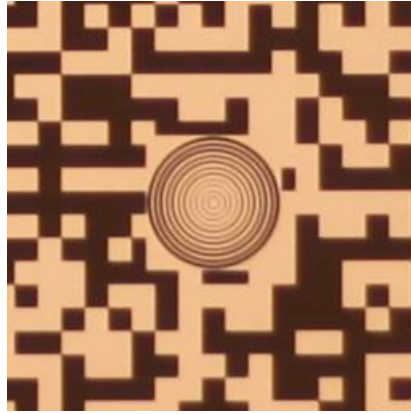
The following image is a crop of the section of image analysed by FoCal:



AFMA=-1

Aperture: f/1.4
Shutter Speed:1/250s
EV: 8.9
Quality Measure: 820.1 (a higher value is a better quality image)
Image was optimised

The following image is a crop of the section of image analysed by FoCal:



AFMA=-1

Aperture: f/1.4

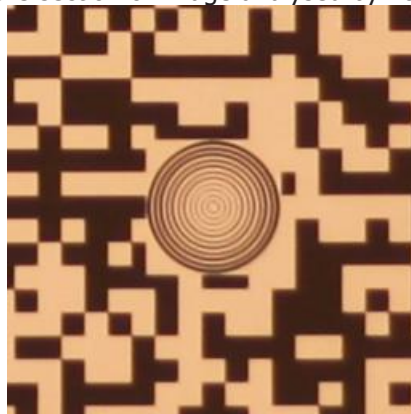
Shutter Speed:1/320s

EV: 9.2

Quality Measure: 812.1 (a higher value is a better quality image)

Image was optimised

The following image is a crop of the section of image analysed by FoCal:



AFMA=3

Aperture: f/1.4

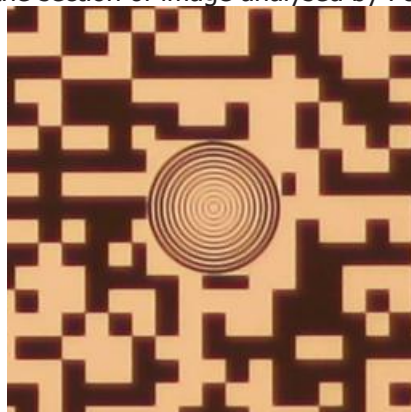
Shutter Speed:1/250s

EV: 8.9

Quality Measure: 994.9 (a higher value is a better quality image)

Image was optimised

The following image is a crop of the section of image analysed by FoCal:

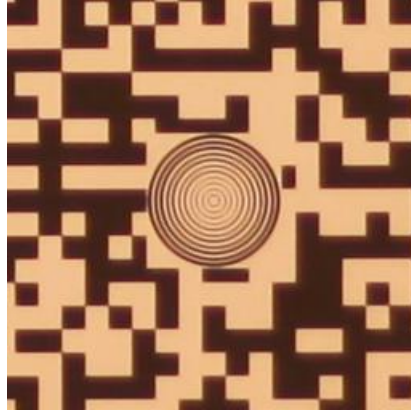


AFMA=3

Reikan FoCal Fully Automatic Mode Test Report
1/20/2012 5:23:15 PM

Aperture: f/1.4
Shutter Speed:1/320s
EV: 9.2
Quality Measure: 941.7 (a higher value is a better quality image)
Image was optimised

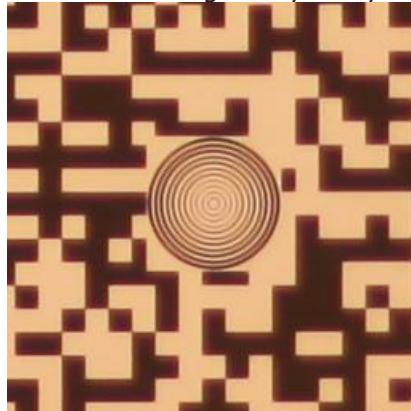
The following image is a crop of the section of image analysed by FoCal:



AFMA=7

Aperture: f/1.4
Shutter Speed:1/250s
EV: 8.9
Quality Measure: 968.0 (a higher value is a better quality image)
Image was optimised

The following image is a crop of the section of image analysed by FoCal:



AFMA=7

Aperture: f/1.4
Shutter Speed:1/250s
EV: 8.9
Quality Measure: 974.4 (a higher value is a better quality image)
Image was optimised

The following image is a crop of the section of image analysed by FoCal:

